

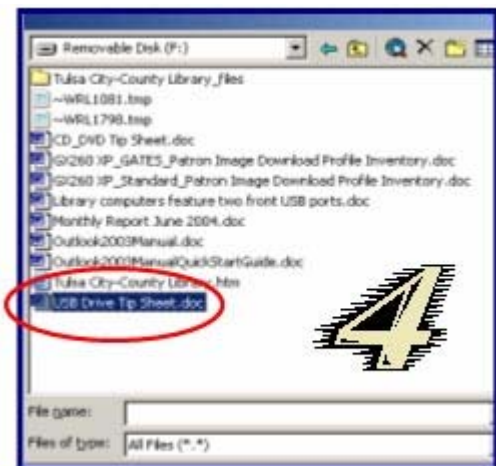
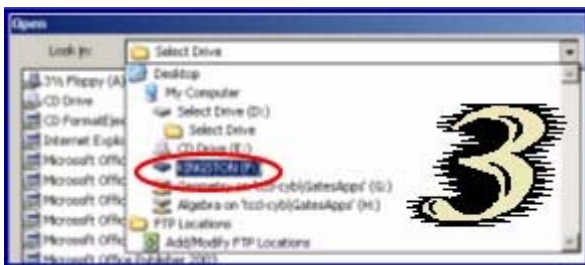
Using USB Ports

The library cannot guarantee that all USB devices will interact with library computers correctly.

Library computers feature two front USB ports. You may use these ports to read files from or save files to your USB device, such as USB pen drives, PDAs, and digital cameras. Please follow the steps below to load your USB device. **Please NOTE: USB devices requiring a software installation or drivers to be loaded will not function on library computers. Connect your device to the library computer at your own risk. The library cannot be held responsible for damage to your device or data.**

1. Locate the USB drives on the front of the computer. They are found on the front left-hand side of the computer itself, directly adjacent to the DELL logo.
2. Carefully insert your USB connector, observing the USB logo on the device facing the right.
3. Click on the FILE menu, choose OPEN and click the drop-down arrow next to "Look in" to find the USB device. If the device does not display in this listing, select MY COMPUTER and look for the device in the file display area. Double-left-click the device to open or save to it.
4. Double-left-click a file to open the file.

Look for the USB Symbol



For guidelines on supported file types, please see the ["Using the CD/DVD Drive Tip Sheet"](#).