

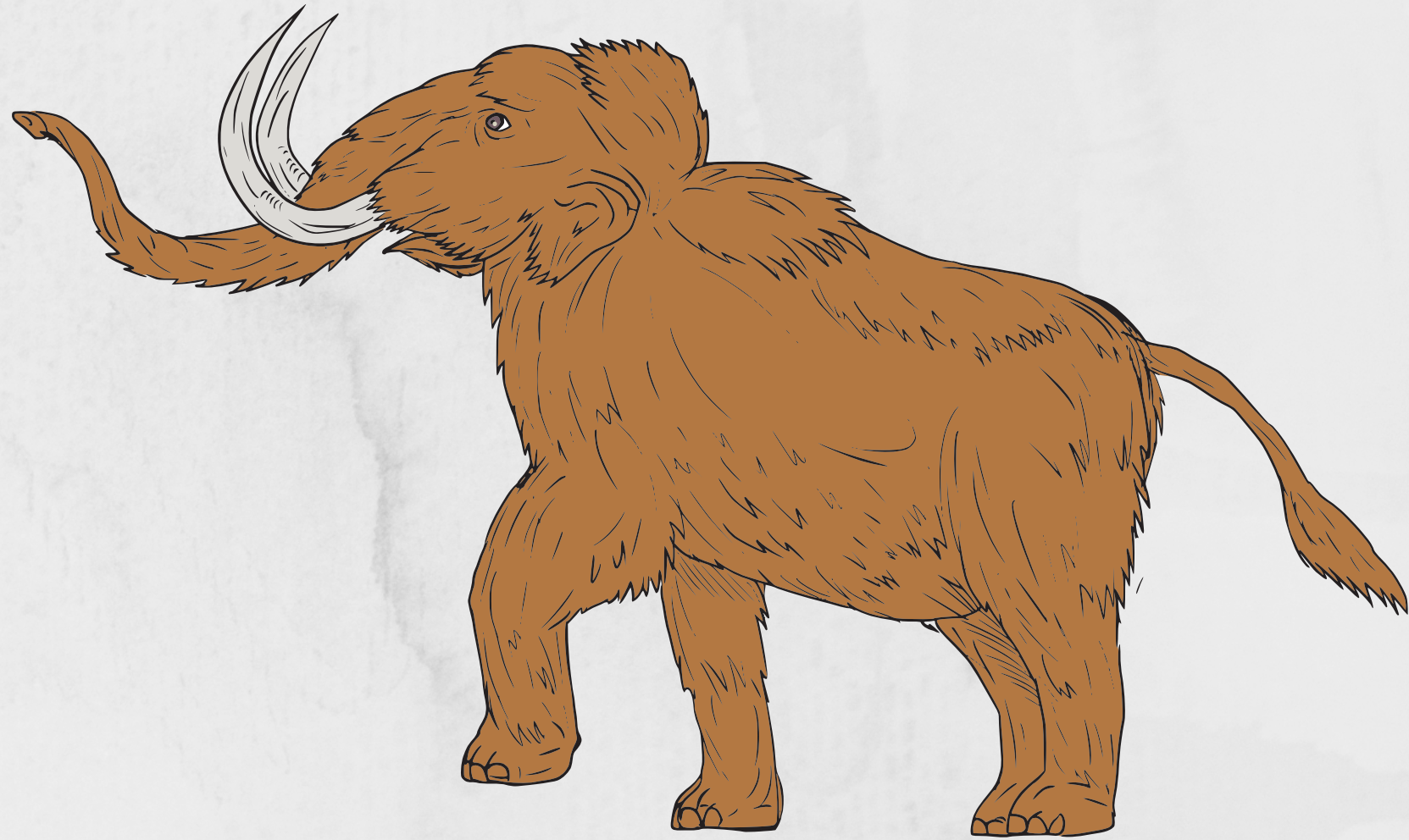
# **EXTINCT ANIMALS!** **(NOT JUST DINOSAURS)**

**IS THAT AN ELEPHANT?!**  
**NOPE--IT'S A WOOLLY MAMMOTH!**

**THE ASIAN ELEPHANT IS A CLOSE  
WOOLLY MAMMOTH RELATIVE TO  
THAT IS STILL ALIVE TODAY!**

**WOOLLY MAMMOTH'S HAD TWO  
LAYERS OF FUR AND THREE INCHES  
OF FAT TO KEEP WARM WHEN LIVING  
IN COLD PLACES.**

**FOSSILS HAVE BEEN FOUND  
EVERYWHERE EXCEPT SOUTH  
AMERICA AND AUSTRALIA.**



## **"THE WAY OF THE DODO"**

**DODOS LIVED ON MAURITIUS, AN ISLAND  
OFF THE COAST OF AFRICA.**

**WHEN HUMANS LANDED ON THE ISLAND IN  
1598, THE DODO BIRDS WERE EXTINCT  
WITHIN JUST 80 YEARS!**

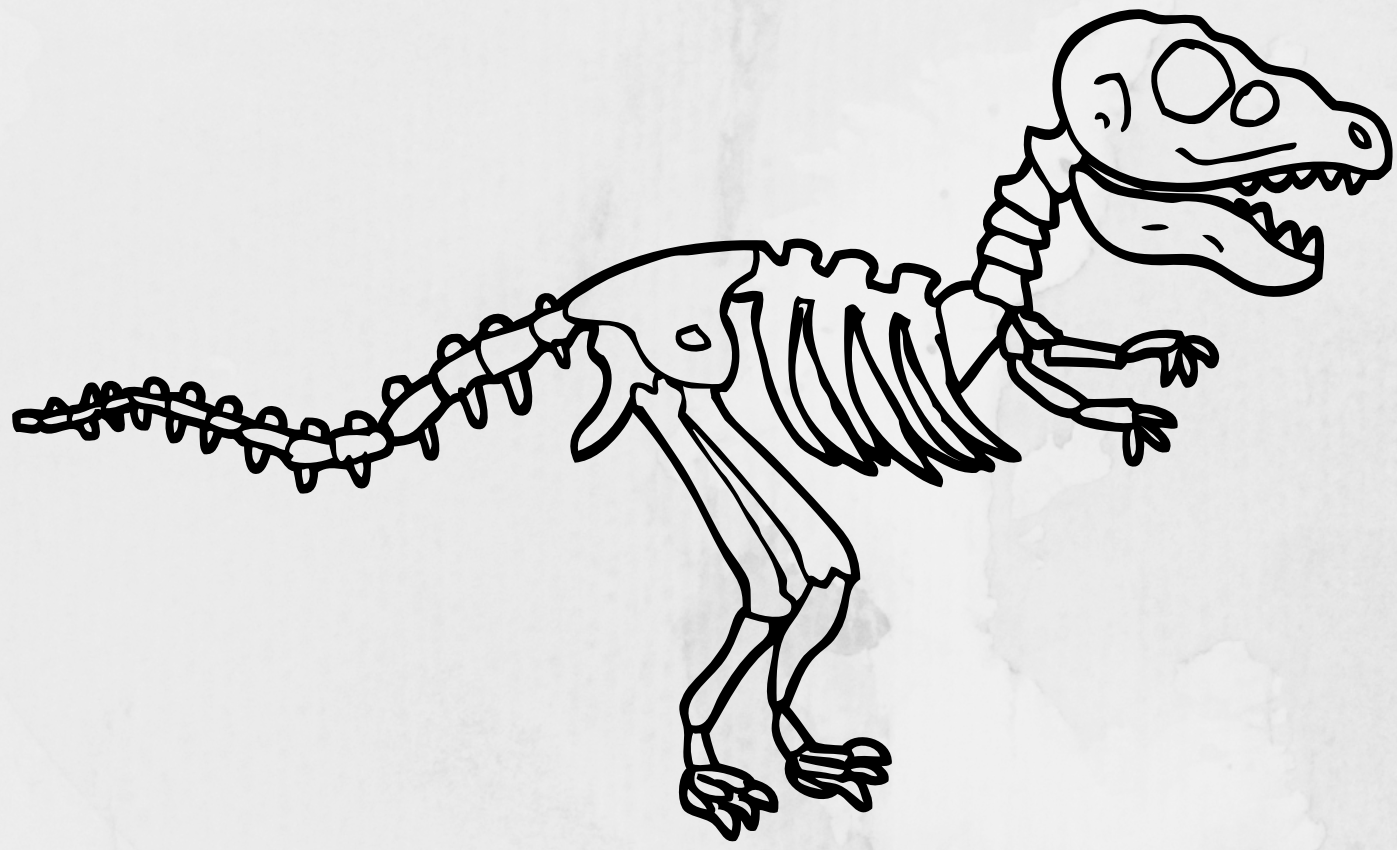
**WHEN PEOPLE SAY "THE WAY OF THE DODO,"  
THEY MEAN THAT IT IS GONE OR EXTINCT!**



**THESE FACTS WERE FOUND IN THE BOOK "MY WEIRD FAST FACTS:  
DINOSAURS, DODOS, AND WOOLLY MAMMOTHS" BY DAN GUTMAN. FIND  
COPIES FOR CHECK OUT IN OUR CATALOG AT [WWW.TULSALIBRARY.ORG](http://WWW.TULSALIBRARY.ORG).**



# WHAT DO YOU WANT TO BE WHEN YOU GROW UP?



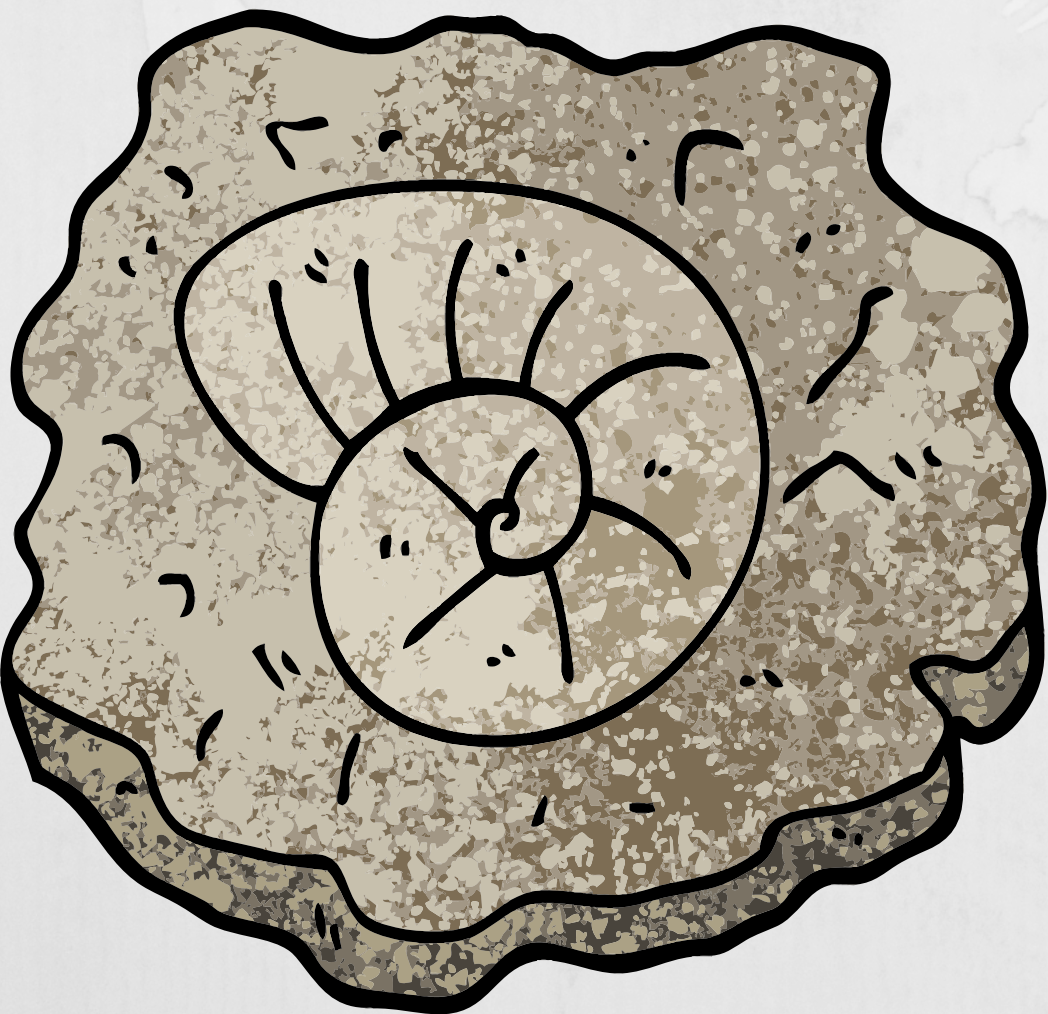
## PALEONTOLOGY

**A PALEONTOLOGIST STUDIES  
THE HISTORY OF LIFE.**

**THIS MEANS THEY GET TO  
SPEND A LOT OF TIME  
WITH FOSSILS!**

## WHAT'S A FOSSIL?

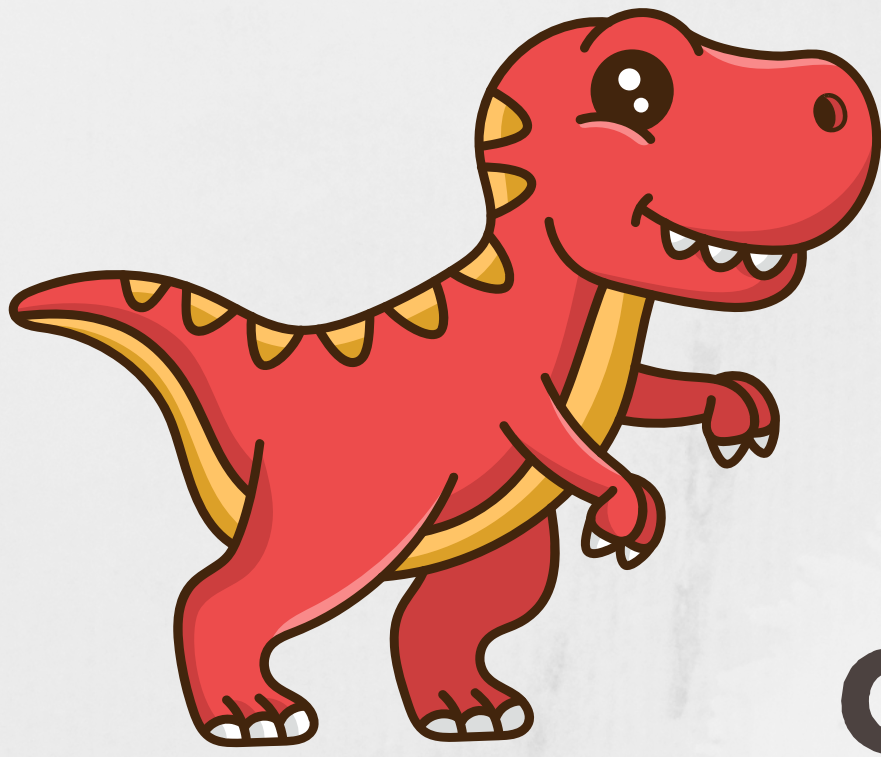
**FOSSILS ARE THE REMAINS OF  
PLANTS, ANIMALS AND MORE  
THAT ARE FOUND IN THE  
EARTH'S CRUST!**



**THIS INFO IS FROM THE BOOK "MY WEIRD  
FAST FACTS: DINOSAURS, DODOS, AND  
WOOLLY MAMMOTHS" BY DAN GUTMAN. FIND  
COPIES FOR CHECK OUT IN OUR CATALOG AT  
[WWW.TULSALIBRARY.ORG](http://WWW.TULSALIBRARY.ORG).**



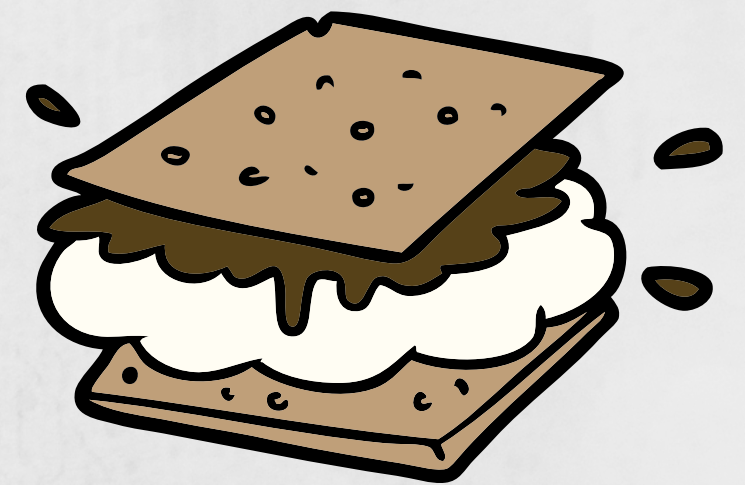
# DINO JOKES!



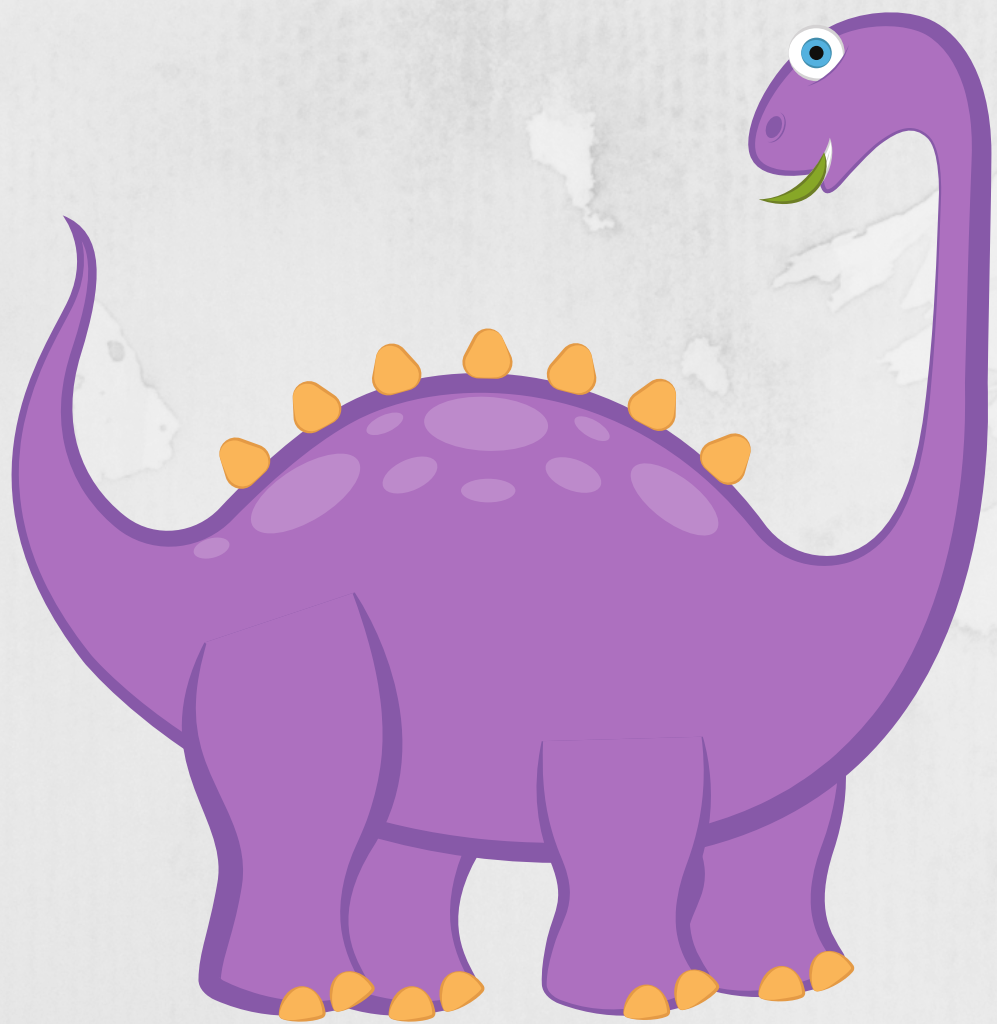
**WHAT DO YOU GET  
WHEN DINOSAURS  
CRASH THEIR CARS?  
TYRANNOSAURUS WRECKS!**



**WHAT DO HADROSAURIDS  
EAT ON CAMPING TRIPS?**



**DINA-SMORES**



**WHAT DID DINOSAURS  
USE TO MAKE THEIR  
BATHROOM FLOORS?**

**REP-TILES!**

**THIS CONTENT IS FROM THE BOOK "MY WEIRD FAST FACTS: DINOSAURS,  
DODOS, AND WOOLLY MAMMOTHS" BY DAN GUTMAN. FIND COPIES FOR  
CHECK OUT IN OUR CATALOG AT [WWW.TULSALIBRARY.ORG](http://WWW.TULSALIBRARY.ORG).**