

Team Up: Practice with Nouns, Verbs, Adjectives, and Adverbs

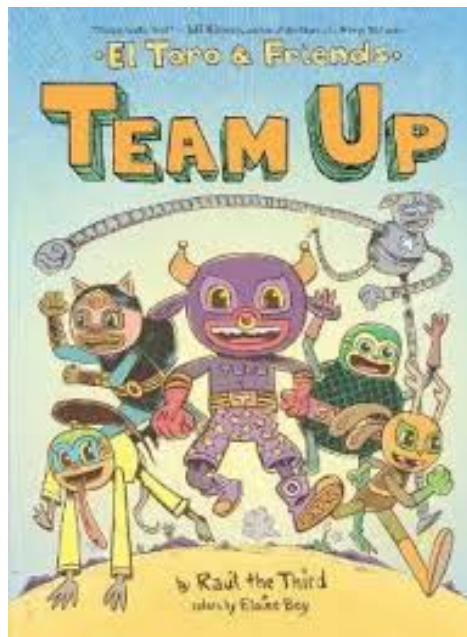
Oklahoma Academic Standards for English Language Arts Grade 2

2.5.R.2 Students will recognize simple and compound sentences. Students will recognize parts of speech in sentences:

- common, proper, and irregular plural nouns
- descriptive adjectives and articles (i.e., a, an, the) as adjectives
- -ly adverbs

2.5.W.2 Students will use nouns, verbs, and adjectives to add clarity and variety to their writing.

1. **Introduce the team** on pages 2 and 3. Elicit prior knowledge about the characters to see what the students already know about them, engage interest, and pull out descriptive vocabulary, or alternatively make speculations about what the characters' abilities might be based on the illustrations.
2. Read *Team Up*.
3. Choose a character to profile on the board, perhaps Ricky Raton (see example below). Fill in the sheet on the board together as an example. Discuss nouns, proper nouns, nouns, verbs, and adverbs in this context.
4. Hand out worksheets and instruct students to pick a character. Pass around character cards to inspire.
5. Students will independently or in groups fill in the worksheet, then share it with the class.
6. Opt: Students make a character for themselves and fill out the additional sheet - Join the Team! Students can tell the class how they would aid in defeating Ricky Raton.
7. Bonus: create a wrestling mask for their character.
8. Extra Bonus: before filling in the profiles, play charades with the characters, encouraging students to consider observe, identify, and mimic the qualities to be written.



TEAM UP

Select a character, then answer the questions below to describe your character.

What animal is this character?

noun

Draw what they look like:

What is the character's name?

proper noun

What are they like?:

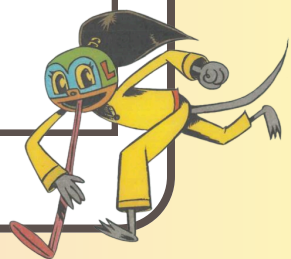
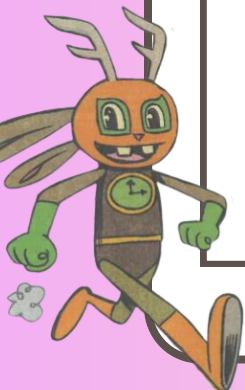
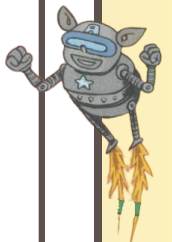
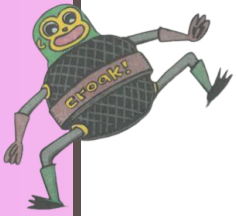
adjective

What actions
do they perform?

verb

How do they do it?

-ly adverb



TEAM UP

Imagine you are on The Team!
Answer the questions below to describe your character,
with any superpowers you choose.

What animal are you?

noun

What is your character's name?

proper noun

What are you like?:

adjective

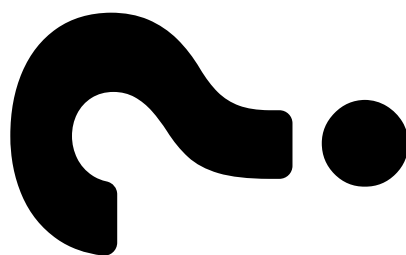
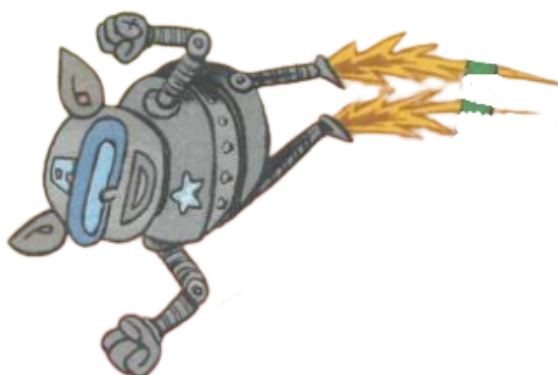
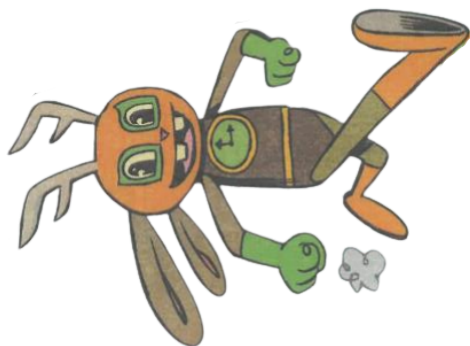
What actions
do you perform?

verb

Draw what your character looks like:

How do you do it?

-ly adverb



TEAM UP

Select a character, then answer the questions below to describe your character.

What animal is this character?

a rat

noun

What is the character's name?

Ricky Ratón

proper noun

What are they like?:

best
strong
big

adjective

What actions
do they perform?

wrestles
teaches

verb

Draw what they look like:



How do they do it?

surprisingly
patiently
trickily

-ly adverb

