



Located on the second floor of
Hardesty Regional Library
8316 E. 93rd St., Tulsa, OK 74133

918-549-7691
genaskus@tulsalibrary.org
www.TulsaLibrary.org/genealogy

HOURS

Monday-Thursday

9 a.m.-9 p.m.

Friday

9 a.m.-6 p.m.

Saturday

9 a.m.-5 p.m.

Sunday

1-5 p.m.

The Genealogy Resource Center's mission is to provide crucial access to genealogy research resources and offer educational opportunities for customers.

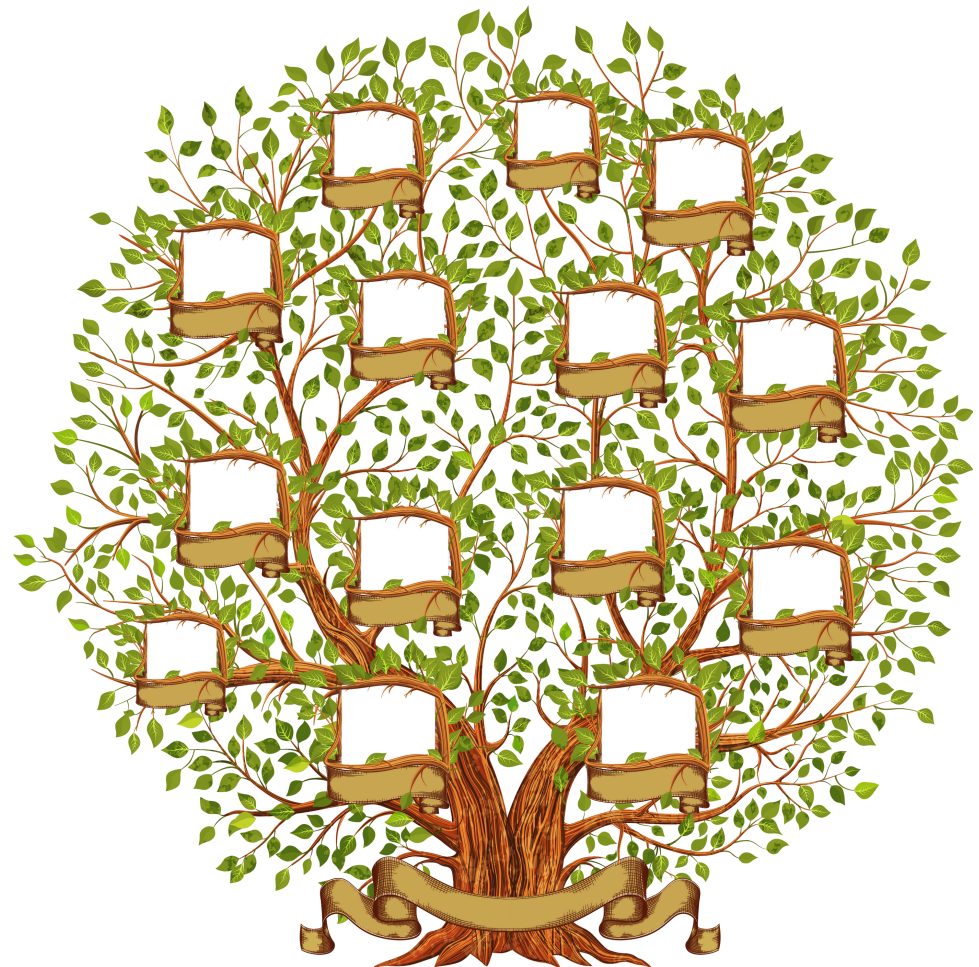
The Genealogy Resource Center's Collection and services help support that mission.

The professional staff remains up-to-date with the latest technology trends and consistently expands their knowledge of new research techniques and new means of connecting with genealogical audiences by attending workshops, webinars, conferences and lectures.

Book a Librarian appointments are available for customers who need help getting started on their genealogical journey or need help breaking through a particularly difficult roadblock.

Visit the Genealogy Resource Center and discover the vast collection of resources and services that are available to family genealogists!

Getting Started With Your Genealogy Research



Where to begin?

Beginning your family history research can be a fun and rewarding experience. However, figuring out how to begin can be overwhelming!

The key is to start with what you know and then work backwards.

- Ask older family members what they remember.
- Go through old family photos or the family bible.
- Review whatever records you already have, such as birth or death certificates, marriage licenses and obituaries.

Using an ancestral chart

Once you've gathered your information, fill out a Family Ancestral Chart. Scan the QR code to find a printable chart, available on the Genealogy Resource Center website (www.tulsalibrary.org/genealogy), or pick up a physical copy up at the Genealogy Resource Center.



Chart #

4 Generation Ancestral Chart

No. 1 on this chart is
same as # ___ on Chart

1 Birth Place Married Place Death Place SPOUSE Birth Death		2 Birth Place Married Place Death Place		3 Birth Place Death Place		4 Birth Place Married Place Death Place		5 Birth Place Death Place		6 Birth Place Married Place Death Place		7 Birth Place Death Place		8 Birth Place Death Place Cont. on Chart _____	
														9 Birth Place Death Place Cont. on Chart _____	
														10 Birth Place Death Place Cont. on Chart _____	
														11 Birth Place Death Place Cont. on Chart _____	
														12 Birth Place Death Place Cont. on Chart _____	
														13 Birth Place Death Place Cont. on Chart _____	
														14 Birth Place Death Place Cont. on Chart _____	
														15 Birth Place Death Place Cont. on Chart _____	

The Ancestral Chart will act as a road map for your research and will help you keep your information about each family member organized. Fill it out as completely as possible with:

- Names
- Birth dates and places
- Marriage dates and places
- Death dates and places

Digging deeper

The best way to begin your research journey is by starting with a relative born on or before April 1, 1950.

Use the Census Record Collection in Ancestry Library Edition, available at www.tulsalibrary.org/databases on any TCCL computer or personal device connected to TCCL Wi-Fi. Begin with the 1950 census. Search using a name (remember to use a pre-marital (maiden) last name for female ancestors). Make sure to use an approximate birth year and birth state. Then hit search.

Make sure to look for that person's spouse (if they were an adult) or parents (if they were a child) to verify you have the right person. Make sure to record all the information you find on the census record. It will help you as you research in other census records.

Keep in mind

The most useful census records for researching in are 1850-1950 for the United States. These census records included information for all household members and could help fill gaps within your research.