



Located on the second floor of  
Hardesty Regional Library  
8316 E. 93rd St., Tulsa, OK 74133

**918-549-7691**  
**genaskus@tulsalibrary.org**  
**www.TulsaLibrary.org/genealogy**

#### HOURS

**Monday-Thursday**  
9 a.m.-9 p.m.  
**Friday**  
9 a.m.-6 p.m.  
**Saturday**  
9 a.m.-5 p.m.  
**Sunday**  
1-5 p.m.

**The Genealogy Resource Center's mission is to provide crucial access to genealogy research resources and offer educational opportunities for customers.**

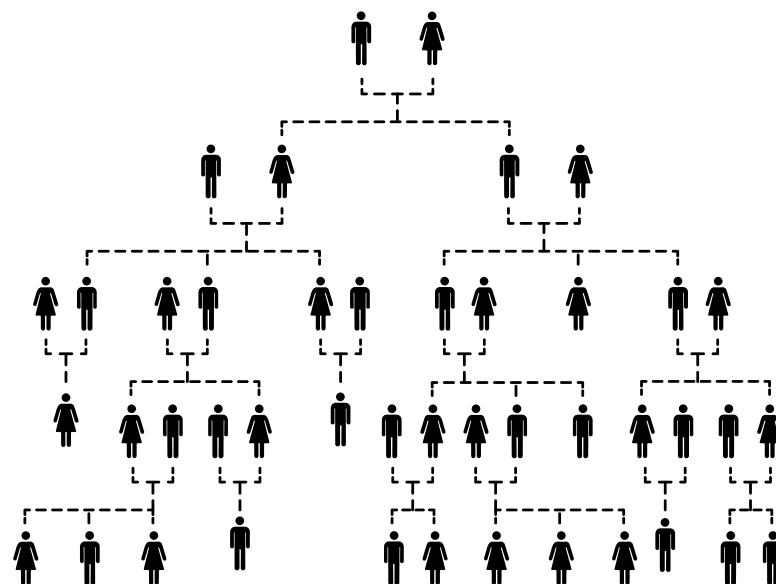
The Genealogy Resource Center's Collection and services help support that mission.

The professional staff remains up-to-date with the latest technology trends and consistently expands their knowledge of new research techniques and new means of connecting with genealogical audiences by attending workshops, webinars, conferences and lectures.

Book a Librarian appointments are available for customers who need help getting started on their genealogical journey or need help breaking through a particularly difficult roadblock.

**Visit the Genealogy Resource Center and discover the vast collection of resources and services that are available to family genealogists!**

# Getting Started With FamilySearch



[www.familysearch.org](http://www.familysearch.org)

## What is FamilySearch?

Family Search is a free global genealogy platform from the Church of Jesus Christ of Latter-day Saints offering millions of digitized records and user-submitted family trees.

## What can I find on FamilySearch?

- Birth, marriage, death Records
- Census and population schedules
- Church and religious records
- Wills and probate records
- Military service and drafts
- Immigration and naturalization
- Land & property deeds
- Cemetery obituaries
- School, tax and employment records
- Family trees and photos
- Global collections (Central and South American, UK, Germany, Scandinavia, etc.)

## How do I access FamilySearch?

- Visit [www.familysearch.org](http://www.familysearch.org)
- Create a free account for access
- Some records require library or affiliate center access. Hardesty Regional Library and the Genealogy Resource Center is an affiliate location and you will be able to access more records by logging into your account using our Wi-Fi or library computers.

## How to search on FamilySearch

- Use the “Search > Records” tool to search by name and location.
- Use “Catalog” to locate digitized books, films and microfilms by place.
- Use “Images” to browse non-indexed collections.

## Search tips

- Try multiple search types: record, catalog, and images.
- Use wildcards and filters to manage large result sets.
- Save discoveries to a personal tree (if signed in).

## Common issues

- Locked records are only viewable from an affiliate library or a FamilySearch Center.
- Indexed names may differ from original spelling.

## Keep in mind

FamilySearch’s family tree is a free and valuable tool. It operates as a collaborative project, meaning that millions of users can add, edit, and modify the data. This allows for shared knowledge and discoveries, but it also means that the information you enter can be changed by others, sometimes leading to inconsistencies or errors. As a result, users must regularly verify and review their tree to ensure the accuracy of the information.